

From
\$397,000
per unit site or
\$796,000
both combined*

Land & Planning Permits for
Two Architect-Designed
Modern Townhouses
Each Plan Features:
4 Spacious Bedrooms
with Built-in/Walk-In robes
3 Bathrooms or ensuites
Maximum natural light
Spacious Living & Dining
Secure Lock-up Garage
Added Off-Street Parking
WC/Powder Room per floor
Butler's Pantry (scullery)
Additional side entries
Fenced Backyards

Land Approx. 650m²
Combined Dimensions:
Floor Area Approx. 525m²
Land Area 650 m²
Fabulous Local Amenities

BENTLEIGH 12a & 12b London Street

For
SALE

Exceptional opportunity to develop two new townhouses in a popular established suburb



- 4  Spacious bedrooms with built-in robes and walk-through robe for master bedroom.
- 3  Central bathroom and ensuite to each main bedroom on each floor. Plus a powder room and WC on each floor of each townhouse.
- 2  Secure lock-up garage and an off-street parking spot for each townhouse.
- 6.2  6.2 Star Energy Rating design with plenty of natural light to all rooms and vistas.



Features include:

Walk to shops, schools, train and bus transport, parks & sporting facilities.

SAVE tens of thousands of dollars in duties and interest charges*.

Full Planning Permit from Glen Eira Council (condition 1 permit).

Combined overall floor plans span around 525m² on land totalling 650m²

Pay as little as 5% deposit with fully negotiable settlement terms.

Flexible terms and finance options available.

Opportunity to choose your fixtures, fittings and even your own builder.



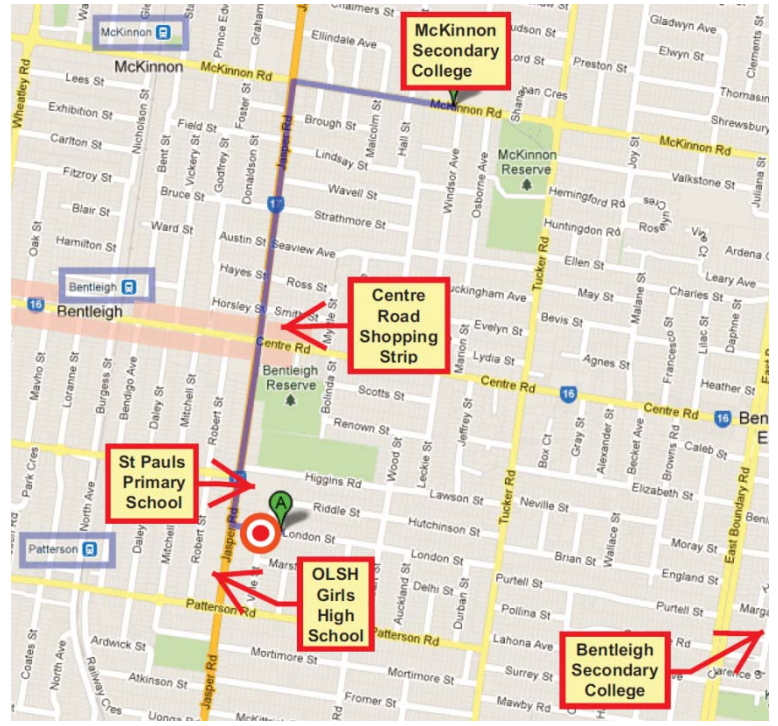
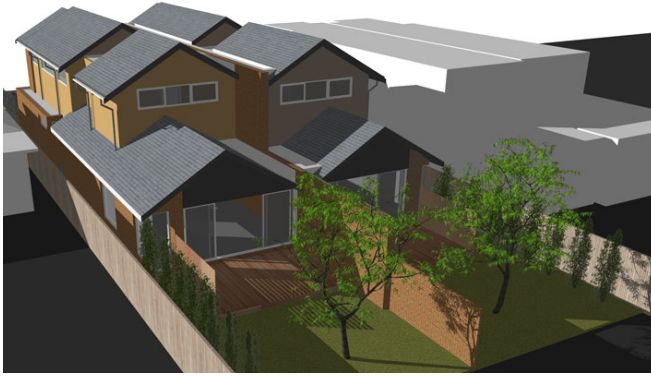
VendorHQ

www.vendorhq.com

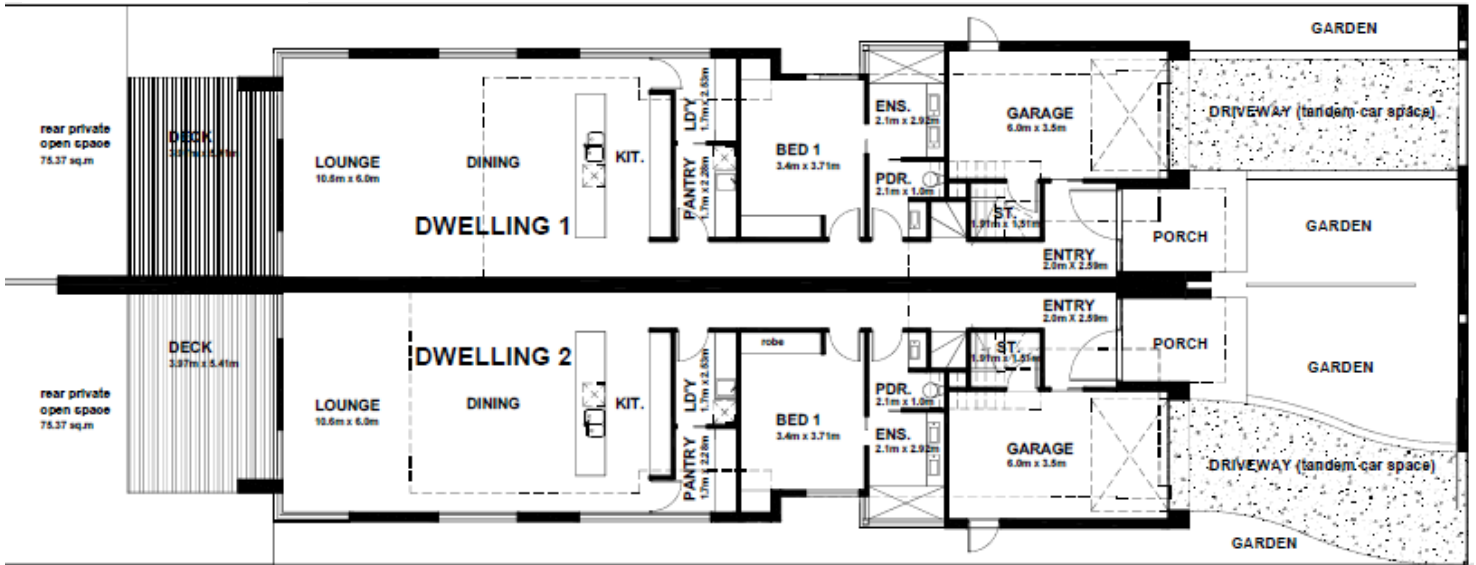
*call for pricing, conditions, plans & permits **1300 669 331**

www.vendorhq.com

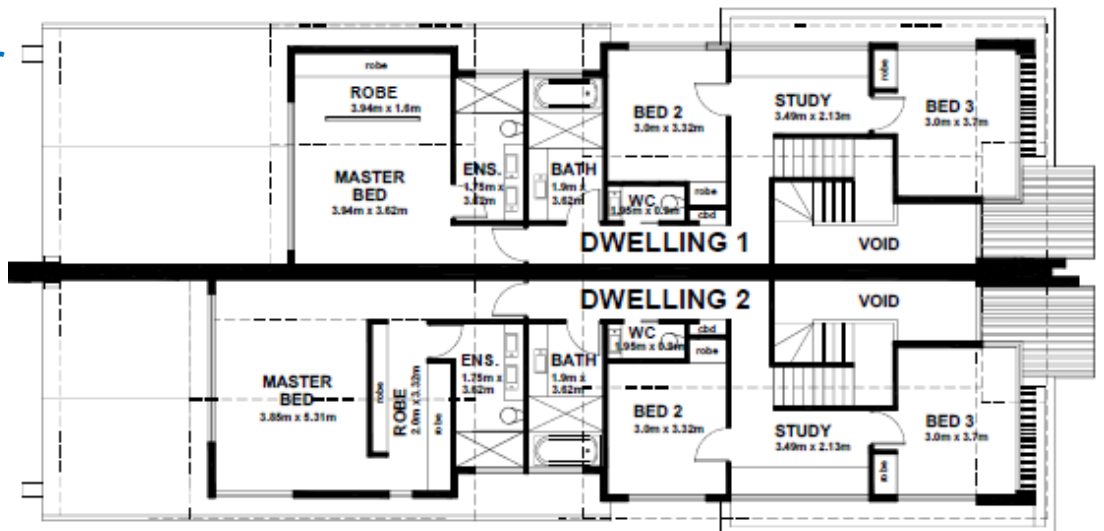
12a & 12b London Street Bentleigh



Ground Floor



First Floor



VendorHQ
www.vendorhq.com

*Please call for plans, permits & pricing

1300 669 331

www.vendorhq.com