

From
\$887,500

per unit built for
you **off-the-plan**.

The exact price
depends on your
choice of terms,
fixtures & fittings.

Two Architect-Designed
Modern Townhouses built
Off-the-plan to specification
Each Plan Features:





- 4 Spacious Bedrooms
with Built-in/Walk-In robes
- 3 Bathrooms or ensuites
- Maximum natural light
- Spacious Living & Dining
- Secure Lock-up Garage
- Added Off-Street Parking
- WC/Powder Room per floor
- Butler's Pantry (scullery)
- Additional side entries
- Fenced Backyards

BENTLEIGH 12a & 12b London Street

For
SALE

*Exceptional opportunity to purchase two new
townhouses in a popular established suburb*



- 4  Spacious bedrooms with built-in robes and walk-through robe for master bedroom.
- 3  Central bathroom and ensuite to each main bedroom on each floor. Plus a powder room and WC on each floor of each townhouse.
- 2  Secure lock-up garage and an off-street parking spot for each townhouse.
- 6.2  6.2 Star Energy Rating design with plenty of natural light to all rooms and vistas.



Features include:

Walk to shops, schools, train and bus transport, parks & sporting facilities.

SAVE tens of thousands of dollars in duties and interest charges* even if you are not a First Home Buyer.

Combined overall floor plans span around 525m² on land totalling 650m²

Pay as little as 5% deposit with fully negotiable settlement terms.

Flexible terms and finance options available.

Opportunity to choose your fixtures, fittings and even your own builder.



VendorHQ

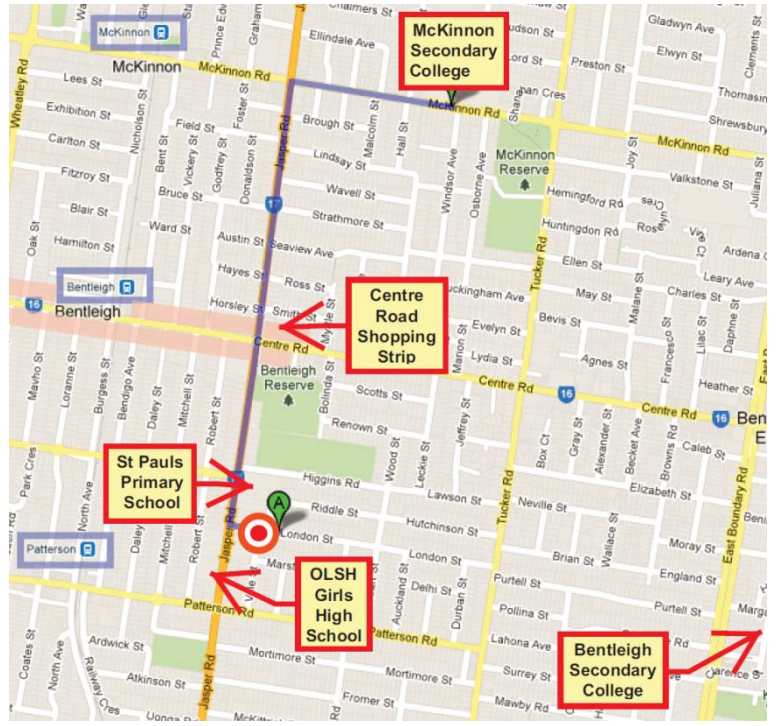
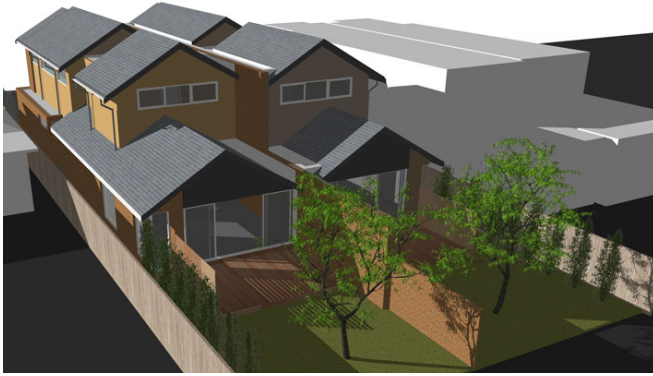
www.vendorhq.com

*Please call for plans, permits & pricing

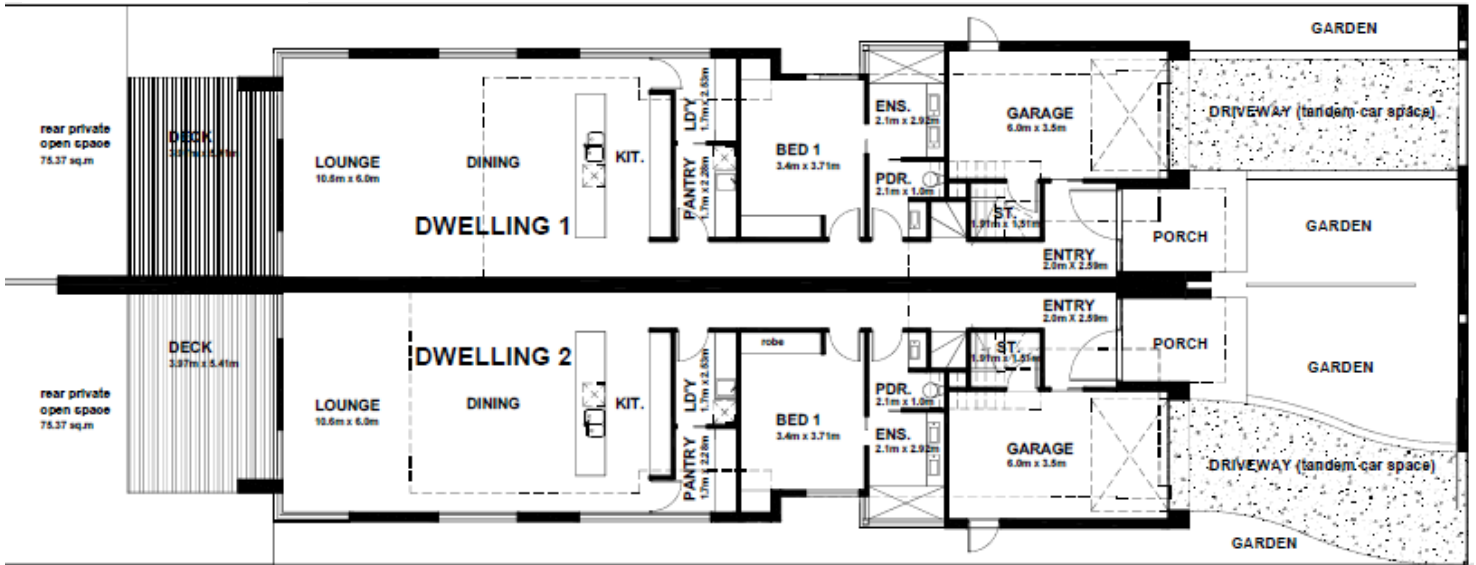
1300 669 331

www.vendorhq.com

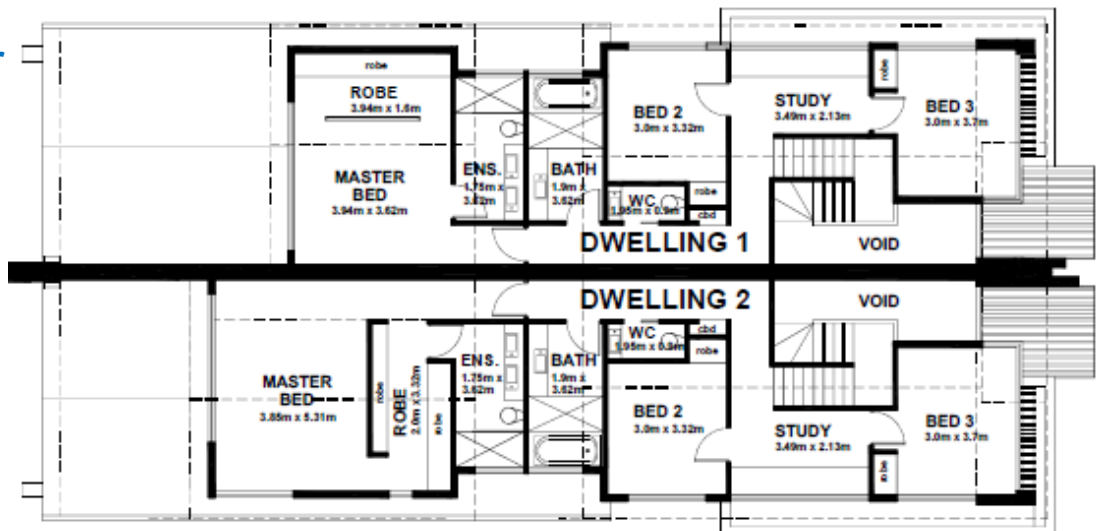
12a & 12b London Street Bentleigh



Ground Floor



First Floor



VendorHQ
www.vendorhq.com

*Please call for plans, permits & pricing

1300 669 331

www.vendorhq.com